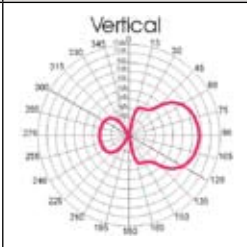
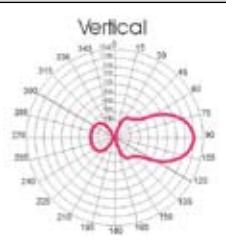
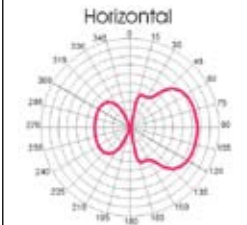
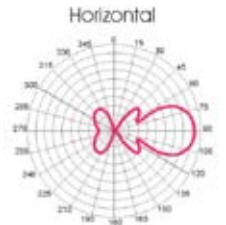


YAGI ANTENNAS 136-180 MHz

Technical specifications

Yagi Antennas		
TY150 Series	Frequency range 136-166 MHz	
	TY150E3-7	TY150E5-9
TY160 Series	Frequency range 150-180 MHz	
	TY160E3-7	TY160E5-9
Electrical specifications		
Gain, dB	7	9
Front-to-Back Ratio, dB	17	20
Power rating, W	300	
Bandwidth, MHz	30	
SWR	<1,5:1	
Impedance, Ohm	50	
Vertical Beamwidth, deg	80	45
Horizontal Beamwidth, deg	65	40
Lightning protection	DC Ground	
Termination	N-Type Female	
Mechanical specifications		
Number of elements	3	5
Dimensions, m	1,4x1,05 1,3x0,95	1,65x1,05 1,53x0,95
Weight, kg	4	4,5
Max Rated Wind Velocity, km/h	240	
Max Rated Wind Velocity with 0.01m radial ice, km/h	200	
Flat plate equivalent, sq.m	0,10	0,12

Diagrams	TY150E3-7, TY160E3-7	TY150E5-9, TY160E5-9
Vertical radiation pattern		
Horizontal radiation pattern		

TY150, TY160 Series

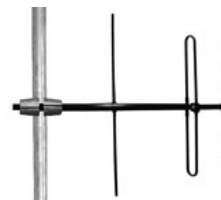
The Comtech TY150, TY160 are high performance Yagi antennas, each supplied with a mounting clamp and an N-type Female connector. All parts of antenna's body are at DC ground potential.

Patented protective layer is applied to antenna parts guarding against corrosion in extreme hostile environments.

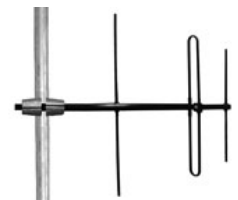
Each antenna is completely protected from corrosive gases, ultraviolet radiation, salt spray, acid rain and abrasives such as windblown sand in desert environments.

Mounting. TY150, TY160 series antennas ships standard for mast mounting to a 1-3/8" to 2-1/2" (35mm to 62mm) diameter pipe.

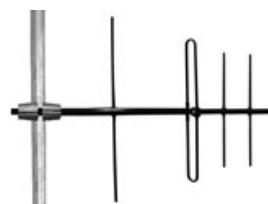
TY150E3-7



TY160E3-7



TY150E5-9



TY160E5-9

